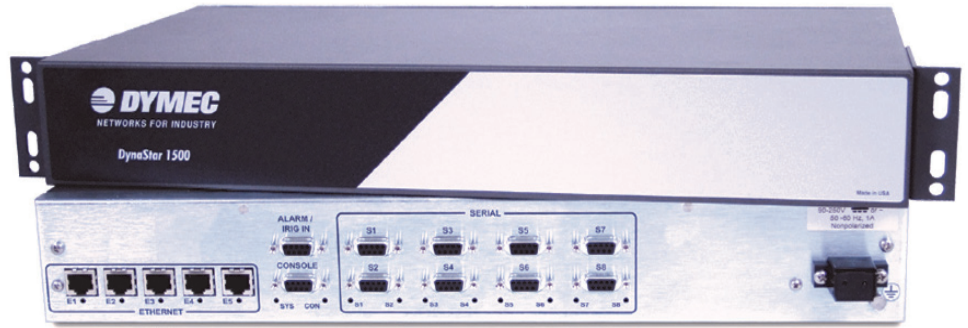


DynaStar DS1500-ETS Ethernet Terminal Server

Features

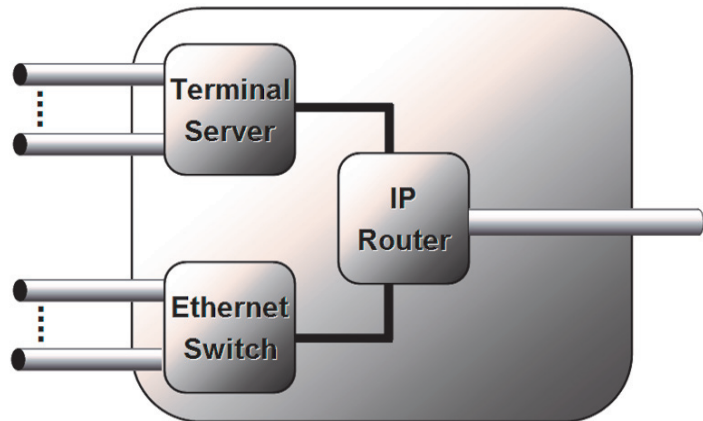
- Hardened for harsh environments
- Meets IEEE 1613 / IEC 61850-3 requirements for power utility substations
- Three networking functions integrated in one product
 - Terminal server
 - Ethernet switch
 - IP router
- Eight serial ports, 300 bps to 230.4 kbps
- Five 10/100 Base TX Auto-sensing Ethernet ports
 - Or
- Three 10/100 Base TX Auto-sensing Ethernet ports with 2 optional (singlemode or multimode 100FX SFP ports)
- Multi-Protocol support
 - Async, SCADA, Ethernet, TCP/IP
 - Ethernet switching
 - Flow control
 - Prioritization
 - VLANs
 - Rapid Spanning Tree
 - IP Routing, RIP, RIP II, RIP RX, OSPF, Static
 - IP VPN using IPSec
 - VLAN support
 - IP address filtering
 - DHCP service
- Menu-driven and SNMP management
- Port mirror on Ethernet switch ports
- Powerful built-in protocol analyzer
- No fans or moving parts
- Non-vented sealed steel enclosure
- AC & DC power options



DS1500-ETS Ethernet Terminal Server

Supporting eight serial and either five 10/100 TX Ethernet interfaces, or three 10/100 TX Ethernet and two optional 100 FX SFP optical interfaces, the DynaStar1500 Ethernet Terminal Server (ETS) delivers reliable and secure Ethernet and Serial connectivity for multiple industrial automation devices at your site.

The DynaStar DS-1500-ETS is specifically designed for industrial monitoring and control networks operating in harsh environments. Combining three different networking functions (terminal server, Ethernet switch, and IP router), the DS1500-ETS can replace multiple communication network devices, increasing operational reliability and significantly reducing hardware and deployment costs.



A "Hardened" product, the DS1500-ETS is built to thrive in the harshest environments and conditions, including: extreme temperatures, high humidity, power surges, ground potential rise, EMI/RFI interference as well as other tough environmental conditions often found in industrial and remote process sites.

The DS1500-ETS can function as both an Ethernet switch and an Async-TCP/IP terminal server, supporting multiple application and device interfaces including legacy, bit-oriented protocols, Async/serial protocols and IP/Ethernet. The DS1500-ETS is ideally suited to enable IP conversion strategies for SCADA traffic and other non-IP based process control, supervisory or monitoring communications traffic.



GarrettCom[®]
Industrial Networking at Its Best™

